



HeartShare

HUMAN SERVICES OF NEW YORK

Table Of Contents

HeartShare Developmental Disabilities Services	6
Residential Services	8
Community Habilitation Services	10
Day Services	12
Medicaid Service Coordination	14
Pre-Vocational & Employment Services	16
Respite/Recreation Programs	18
Options Program	20
Pre-School Services	22
The HeartShare School	24
HeartShare Wellness, Ltd.	28
Article 16 Clinic	30
Health Home Program	32
Energy Assistance and Community Development	34
HeartShare St. Vincent’s Services	36
Foster Care & Adoption	38
Preventive Services	40
American Dream Program	42
Supported Housing	44
After-School & Community Services	46
Chemical Dependency Clinic	48
Our Memberships and Affiliations	50
Our Programs	51
Our Donors	55
Our Financial Statement	61



Our Mission

HeartShare and its Family of Services nurtures and supports, with dignity and respect, children, adults and families in order to expand opportunities and enhance lives.



**Your support
empowers
individuals
to overcome
challenges and
reach their full
potential.**

Thank You!

Paul Torre
Chairman of the Board

Bill Guarinello
President & CEO



About HeartShare and its Developmental Disabilities Services

HeartShare Developmental Disabilities Services assist children and adults diagnosed with intellectual and developmental disabilities, including autism spectrum disorders, cerebral palsy and Down Syndrome. From education and life skills to respite and health services, HeartShare offers greater access to a more independent life. Since its founding in 1914, HeartShare has expanded to over 100 program sites across Brooklyn, Queens and Staten Island. HeartShare is proud that 90% of all revenue goes directly to its programs and services. HeartShare is accredited by the Council on Accreditation (COA) and is a Better Business Bureau Accredited Charity.

BOARD AND LEADERSHIP

Paul J. Torre
Chairman

Robert Charles Golden
First Vice Chair

John T. Sharkey
Second Vice Chair

Michael J. Abatemarco, CPA
Treasurer

Salvatore B. Calabrese
Secretary

Members

Arleen Baez
Joseph R. Benfante, Esq.
Joseph A. Caruana, DO
Nancy C. Cianflone
Angelo J. Del Giudice
Craig A. Eaton, Esq.
The Reverend Patrick S. Flanagan, CM
Jonathan C. Goldstein, Esq.
Mark C. Healy
Johnny Johnston
Christopher G. Jones, MSW
Jim Kerr
Frank J. Maresca
Raymond J. Mollica, DPM
Terence K. Mullin
Kenneth P. Nolan, Esq.
The Reverend Thomas G. Pettei
Andrew T. Piekarski
Peter E. Pisapia, Esq.
Dennis W. Quirk
Rosanna Scotto
Christine E. Strehle

ADMINISTRATION

President and CEO
William R. Guarinello, MS

Chief Financial Officer
Anthony F. Bianca

Controller
Lynette Fernandez

Executive Vice President
George A. Cincotta, Jr.

Vice Presidents

Meredith A. Beck
Stanley T. Capela
Michael A. Cutrona
Theresa Malot
Vincent L. Pagnotta
Jennifer Reres, MPA

Directors

Alex Bethea
Amanda Holder
Peter Lavin
Danielle Maurice
Rosie Millan
Teresa Wong
Rose-Ann Ambrose
William Sheridan

Special Assistant
Hayley Cowitt, Esq.

DEVELOPMENTAL DISABILITIES SERVICES

Executive Director
Linda Tempel, MS, MBA

Associate Executive Director
Evelyn Alvarez, MA

Executive Vice President
Joyce Levin, MS

Senior Vice President
Carol Verdi, LCSW

Vice Presidents
Deborah Bencivenga
Donna M. Carroll, MSA
Robert Jordan, MA

Senior Directors
Dominick Barone
Priscilla C. Bannerman
Barbara Falcone, MA
Suzanne Schein-McLemore, RN
Africa Staples, MPA
Tracey Stokes, MHA
Dawn White, MA

Directors
Eunice Beck, MSW
Enitza Carril, Ph.D.
Dianne Cattrano, MS, SAS

Amy Fried
Jennifer Giambra, MA
Melisa Giuffra, MSW
Joanne Green, MPH
Paige Ingalls, LCSW
William Jackson
Karen Johnson-Marshall, MBA
Martha Kuszek, MS, SAS/SDA
Sandra Lichtenstein, MA-CCC-SLP
Loucas Louca, MA
Maria Matrascia
Deborah Pafundi, MS, SAS/SDA
Joshua Skolnick
Kathy Toal, MS, SAS
Laurie Yankowitz, Ed.D.

ENERGY ASSISTANCE & COMMUNITY DEVELOPMENT

Vice President
Joseph B. Guarinello

Director
Tanya Jones

COUNSEL
Wingate, Kearney & Cullen
45 Main Street, Suite 1020
Brooklyn, NY 11201

INDEPENDENT AUDITORS
Loeb & Troper
655 Third Avenue
New York, NY 10017

EMPLOYMENT IDENTIFICATION NUMBER
#11 - 1633549

www.heartshare.org

A photograph of three people standing outdoors in front of a white fence and green foliage. On the left is a woman with long dark hair wearing a bright blue t-shirt with the text 'LOVE TRY SELF' in white. In the center is a man with a mustache wearing a dark blue t-shirt. On the right is a woman with dark curly hair wearing a grey jacket over a white t-shirt with a pattern of small icons and the letters 'NY'. She is also wearing a lanyard with a badge. The background consists of a white fence and dense green plants.

Residential Services

Danielle, Rosemary and Jack grew up together on Staten Island. They were three classmates who became fast friends, and so did their families. “As older parents, we were thinking long and hard about the future. The HeartShare team helped us keep our kids together and gave us that peace of mind,” said Rosemary’s mom, Ciretta. Today, the trio lives at HeartShare’s Scibelli Residence in Dongan Hills. Danielle, Rosemary and Jack each have their own lives, interests and schedules, but at the end of the day, they’re back at Scibelli sharing how their day went and enjoying their backyard. The HeartShare residence is not just a program. It’s a lifelong family.



Community Habilitation Services

Joe, who lives at HeartShare's Attardi Residence in Dyker Heights, Brooklyn, has become an avid bike rider with the help of Direct Support Professional Shawn Benedetto. "I used to be his grandmother's tenant. Joe is like family to me," said Shawn with a smile. Through HeartShare's Community Habilitation Program, Joe learns skills alongside someone with whom he's already comfortable. They've been working on Joe's cycling skills, including biking safely on busy city streets. From the Brooklyn Bridge to the Long Beach boardwalk, Joe and Shawn ride everywhere. Joe plans to race to the finish line at the NYC Five Boro Bike Tour.



Day Services

David is non-verbal, but he's never let that get in the way of communicating with others. "David uses his communication device to indicate what he needs and wants," said Vivian Romero-Gambrell, Assistant Program Coordinator at HeartShare's Hoffman Day Habilitation Program. Whether he's running errands or visiting the Bronx Zoo, David likes to be social by vocalizing. David especially likes to show off his baseball cap, watch and shoes. "Even though he's non-verbal doesn't mean that he can't communicate. He's intelligent, alert – and definitely a fashionista!" said Manager Jackie Bristol, who has known David since he moved into Sharkey I Residence in 1995.



Medicaid Service Coordination

Anthony had the opportunity to see his favorite R&B artist *The Weeknd* at the Barclay's Center. This wouldn't have happened unless HeartShare staff stopped to ask, *What does Anthony enjoy, and how can we help him achieve that?* The HeartShare residential, day habilitation and MSC teams took the time to find out. Over the course of several months, they downloaded songs and created playlists for Anthony. "Through careful observation of his body movement and facial expressions, we identified Anthony's favorite genre of music," said Nena Bowen, a Direct Support Professional at HeartShare's Carroll Street Residence. As a result, Anthony experienced a sense of inclusion and expression of personal identity that we often take for granted.



Pre-Vocational & Employment Services

Justin has been working at HeartShare's Cuomo First Step Pre-School in Richmond Hill, Queens. "I have a lot of different goals," said Justin, who reports sharply at noon to deliver meals to HeartShare pre-schoolers. During his shift, Justin counts off the hot lunches, milk cartons, fruit and salads for each classroom. HeartShare's Pre-Vocational and Employment Programs help people like Justin explore their interests and find a position that's right for them. "I'm not going to be here forever," said Justin with a smile. "I'm going to work towards getting into retail and earning even more. This is just the beginning."



Respite/Recreation Programs

Nathan (center) has been participating in HeartShare’s Respite/Recreation Programs for over a decade. When Nathan’s not working at a local movie theater in Sheepshead Bay, he joins the HeartShare Respite Program for sporting events, Broadway plays and overnight trips to New Jersey and Pennsylvania. These activities are crucial to helping adults with I/DD develop a sense of independence. The overnight trips are often the first time program participants are away from their families. It’s also relief for those caring for a loved one 24/7. “It gets harder and harder as we get older,” said Nathan’s mother, Faye. “Between HeartShare and his brother David, I know he’s in good hands.”

Options Programs

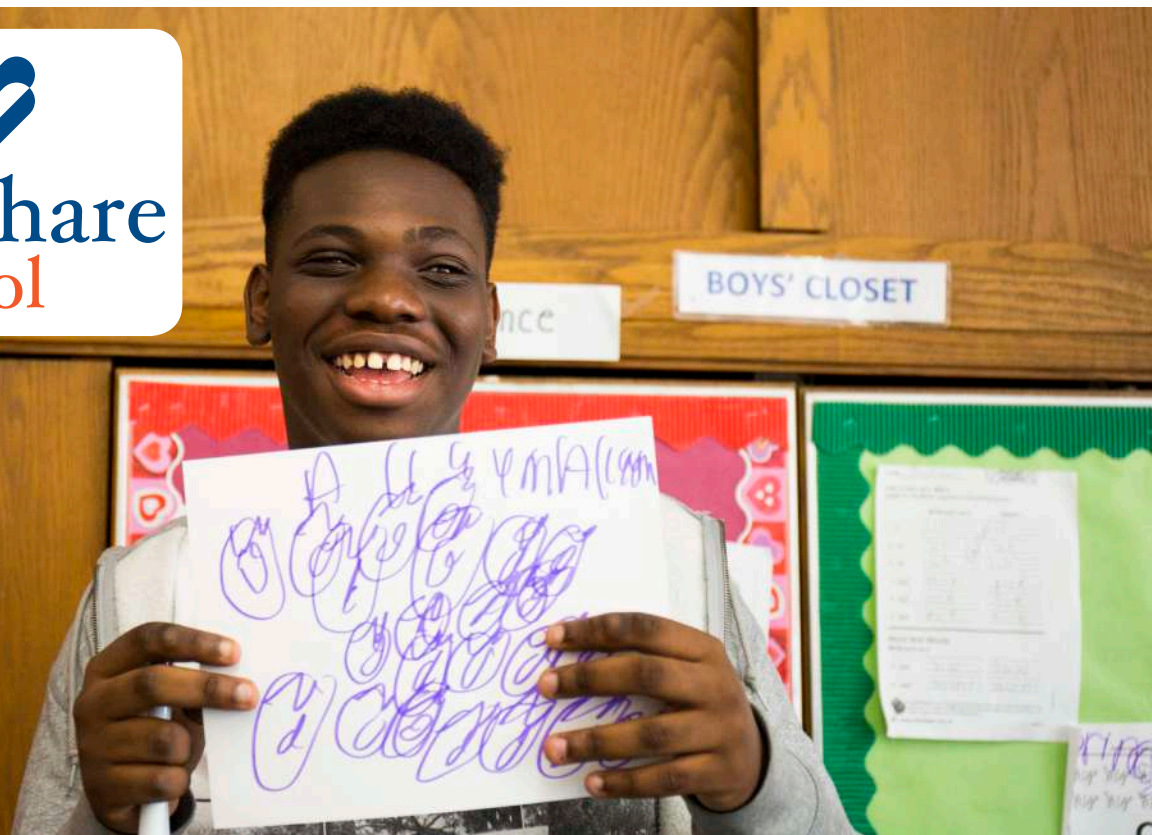
Heather whipped out her medals—an entire bag’s worth. Heather is an athlete thanks to her grandmother and adoptive parent, Marie. “I’ve had her since she was three years old,” Marie said. “I appreciate what HeartShare has done for me. With the Options grant, I can help Heather do what she loves,” said Marie, who uses the grant for Heather to attend a summer camp in upstate New York. As a doting grandmother and primary caretaker, Marie supports Heather in her athletic endeavors. From the Special Olympics to braving the Black Diamond ski trails at Lake Placid, Heather is fearless. Her next endeavor? “I want to learn how to snowboard,” Heather said with a smile.





Pre-School Services

Kaylee was unable to speak when she first started pre-school. With the help of Maria Fareri, a Speech Therapist at HeartShare Kiwanis First Step Program, Kaylee started using sign language. Next, Kaylee learned how to use a communication device. “It’s become her voice,” her mother Krystle explained. “Kaylee has learned to communicate her needs and wants with this device, which is customized to her interests and family life. Kaylee is more comfortable with her peers and I’m welcomed here anytime,” said her mom, who is a familiar face to the other kids on the playground.



About The HeartShare Education Center

The HeartShare Education Center, known as The HeartShare School, opened in 2007 for children ages 5-21, who have been diagnosed with Autism Spectrum Disorders (ASD). At The HeartShare School, the team works with each child and their family to ensure that each reaches the highest level of independence, which possibly means transitioning to a mainstream public school and, one day, living on their own, working a job and participating in family and community life. The school, which follows the Common Core Curriculum, utilizes Applied Behavioral Analysis (ABA), as well as offers occupational, physical and other therapies. The school hosts events encouraging academic inquiry, personal expression and career development.

BOARD OF DIRECTORS

Officers

Laurie Windsor
Chair

Nick Domingues
Vice Chair

Craig A. Ratigan
Treasurer

Barbara A. Slattery
Secretary

Members

Sheila Higginson
Don Huml
Vincent Iannelli
Sylvia LaCerra
Katherine Vero

ADMINISTRATION

Carol Verdi, LCSW
Executive Director

Sharon Toledo, M.Ed.
Director of Education

COUNSEL

Wingate, Kearney & Cullen
45 Main Street, Suite 1020
Brooklyn, NY 11201

INDEPENDENT AUDITORS

Loeb & Troper
655 Third Avenue
New York, NY 10017

EMPLOYMENT IDENTIFICATION NUMBER

#90 - 0452757

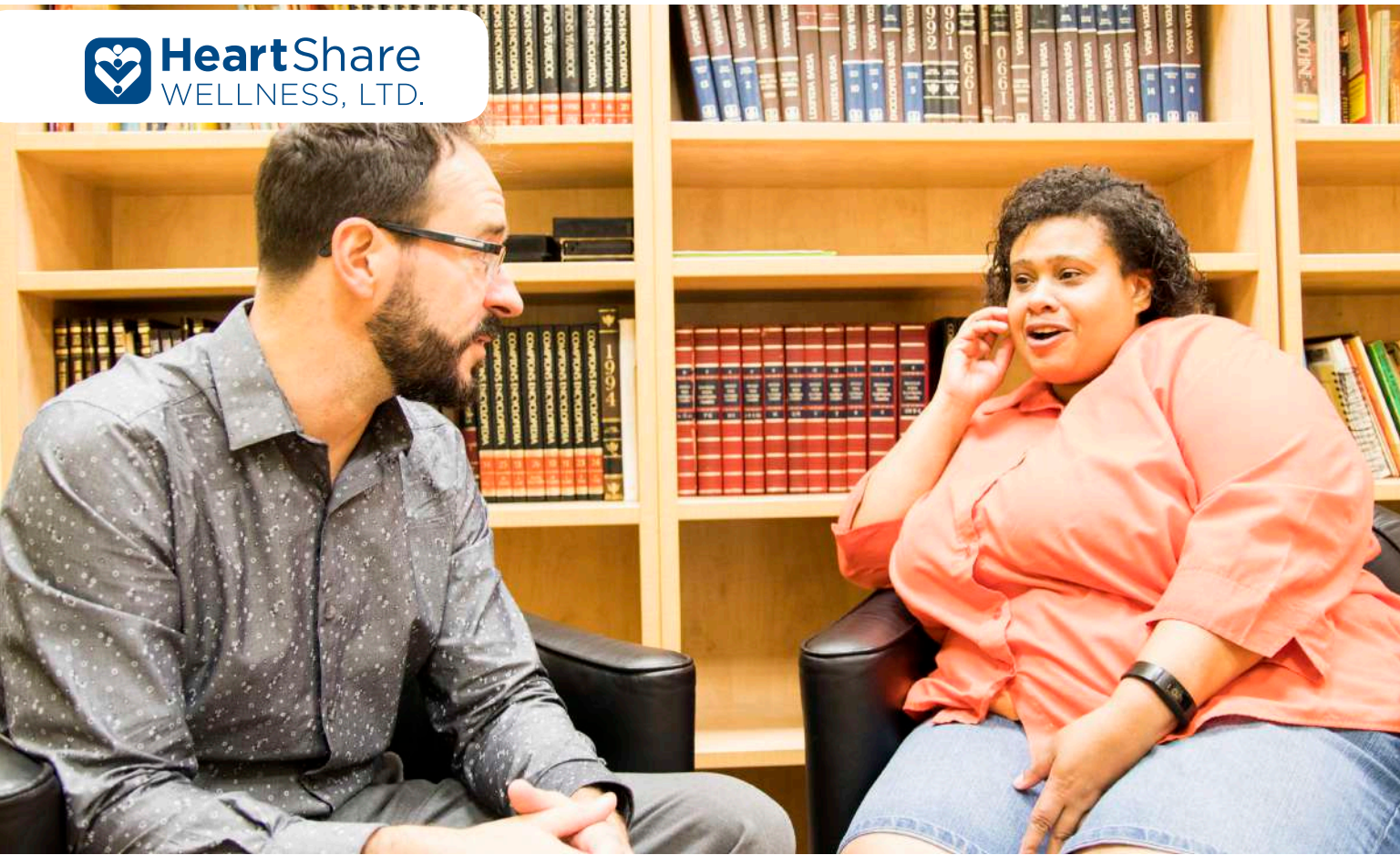
www.theheartshareschool.org





The HeartShare School

Chasitie attended The HeartShare School for children with autism. She also lived at the Children's Residence next door. During her time there, Chas developed her interests and sense of self. She's an avid music lover and dancer. Chas also expresses that energy through fitness, including Zumba. During summers, she enjoys trips to the beach and Hershey Park, PA. Now age 21, she is aging out of the program and is ready to transition to the next part of her young adult life. As Chas transitions out of HeartShare's care, her mother is confident about her more independent future. "Chas will be living in a supported apartment and can mostly take care of herself. I am so proud of her," her mom said.



About HeartShare Wellness, Ltd.

HeartShare Wellness, Ltd. offers health care and health coordination services to some of New York's most vulnerable patients. The Article 16 Clinic is a therapeutic clinic for children and adults with I/DD offering speech, occupational and physical therapies, individual and group counseling, as well as psychological and psychosocial evaluations. A selection of those clinical services are now conveniently available at day habilitation programs throughout HeartShare, Heaven's Home Community Services and the Guild for Exceptional Children. The Health Home Targeted Case Management Program is care coordination for children and adults with two or more chronic conditions. HeartShare Wellness patients, who already face compounded difficulties staying healthy, are met with sensitivity, compassion and specialized knowledge.

BOARD OF DIRECTORS

Joseph A. Caruana, DO
Chairman

Robert Calciano, MD
Vice Chairman

Michael J. Abatemarco, CPA
Treasurer

Carl Campagna
Member

Peter Ungaro
Member

ADMINISTRATION

Joyce Levin, MS
Executive Director

Jude Alexandre, MSW
Senior Director

Angela Thomas, MPA
Clinic Director, Article 16

Gregory Tsinker
Director, Health Home Program

Vincent Siasoco, MD, MBA
Medical Director

COUNSEL

Wingate, Kearney & Cullen
45 Main Street, Suite 1020
Brooklyn, NY 11201

INDEPENDENT AUDITORS

Loeb & Troper
655 Third Avenue
New York, NY 10017

EMPLOYMENT IDENTIFICATION NUMBER

#11 - 3538646

www.heartsharewellness.org



Article 16 Clinic

Leena works with Speech Therapist Jackie O’Loughlin for a thirty minute session each week at HeartShare’s Union Turnpike Day Habilitation Program. The HeartShare Wellness clinic in downtown Brooklyn, which offers physical, speech, occupational and other therapies, has expanded to several satellite locations throughout HeartShare. “Working in the day hab setting allows our clients to keep their appointments, while also incorporating functional words and phrases into the session. Leena loves getting her nails done, and she knows the process, so I use words like ‘nail polish,’ ‘cotton ball,’ and ‘remover,’” she explained. “Leena catches on quickly. She’s making great progress.”



Health Home

Luis relies on a helping hand from Christian Velasco, a Health Home Care Manager. HeartShare's Health Home coordinates health care and resources for children and adults with two or more chronic conditions. "Many of our clients already deal with a lot. We're here to make sure they access the health services they need to stay out of the ER and get better," said Christian, who works with about fifty clients throughout the five boroughs. What is Luis up to when he's feeling well? Visiting the local senior center, watching classic movies and rooting for his home teams.

A woman with dark, curly hair is standing outdoors in front of a brick house. She is wearing a sleeveless top with a blue and black floral pattern and black pants. The house has a brick wall on the left and a white siding on the right. There are some bushes in the foreground. A green rectangular overlay is on the left side of the image, containing white text.

Energy Assistance and Community Development

Christine had difficulty making ends meet when she was diagnosed with cancer two years ago. “I really needed this grant. I had no other option,” she said. As a middle school history teacher in Bay Ridge, Christine was unable to work following the diagnosis. This fall, Christine has been feeling stronger. “I love my students and I want to get back to them,” she said. “Most people don’t realize how crucial the energy grants are. Assistance is not just for a certain type of person. Many of us are one unexpected crisis away from needing a little help,” explained Joe Guarinello, Vice President of Energy Assistance and Community Development.



About HeartShare St. Vincent's Services

HeartShare St. Vincent's Services (HSVS) empowers children, individuals and families to overcome the challenges of family crises, addiction, mental illness and poverty. Working together, HSVS opens new doors of opportunity to help clients achieve healthy and happy lives. With four programmatic divisions - Foster Care and Preventive Programs; Integrated Health Services; Residential and Housing Programs; Youth Development and Community Programs - HSVS staff members serve over 6,800 New Yorkers each year, including the City's most vulnerable youth. This continuum of services enables HSVS to meet clients' unique circumstances and needs, equipping them with the tools and skills necessary to achieve their dreams. By offering a stable home, a safe place to go after school, a means to graduate college and the skills to achieve physical and mental well-being, HSVS equalizes opportunities for those who need it most.

Our Vision

Our commitment to excellent services and supports will enable children, adults and families to reach their fullest potential and lead meaningful lives as active participants in society.

Our Key Commitments

- Making sure that every child we serve is in a safe environment, where they have a loving connection with a caretaker, and access to the social, emotional, and educational support they need to meet their development milestones.
- Empowering and engaging parents through the delivery of a comprehensive set of services and support that help them get their children home as safely and quickly as possible, or keep their children home safely.
- Delivering services to individuals, children and families that have been proven to change lives for the better, and are flexible enough to meet the needs of each individual and his or her unique circumstances.
- Helping youth find and follow their own path to transition into adulthood, become self-sufficient, and achieve their dreams.
- Ensuring staff have the tools and supports they need to achieve the vision of the agency and thrive, both personally and professionally, in an environment that is respectful, inclusive, and enriching.
- Celebrating success in all forms and across all aspects of our agency, and encouraging our staff and the individuals we serve to do so in concert with us.

BOARD OF DIRECTORS

Kenneth P. Nolan, Esq.
Chair

Cody K. McCone, Esq.
Secretary

Jonathan C. Goldstein, Esq.
Treasurer

Members

Robert M. Corwen, Jr.
Craig A. Eaton, Esq.
Rev. Msgr. Robert M. Harris, LCSW-R
Christopher G. Jones, MSW
Laura Lazarus
Thomas J. McManus, Esq.
Sean Ringgold
Mark A. Van Lith

ADMINISTRATION

Executive Director

Dawn V. Saffayeh, MPA

Senior Vice President

Jennifer Outlaw, LCSW, CCM, CPC

Vice Presidents

Joan Baim, Esq.
Melissa R. Ferrari, MBA
Shanna Gonzalez, LCSW
Brooke Rosenthal, Esq.
Shawnta Washington, MPA

Senior Directors

Sherry Brumel
Sydney McKinney

COUNSEL

Wingate, Kearney & Cullen
45 Main Street, Suite 1020
Brooklyn, NY 11201

INDEPENDENT AUDITORS

Loeb & Troper
655 Third Avenue
New York, NY 10017

EMPLOYMENT IDENTIFICATION NUMBER

#11 - 1631823

www.hsvsnyc.org



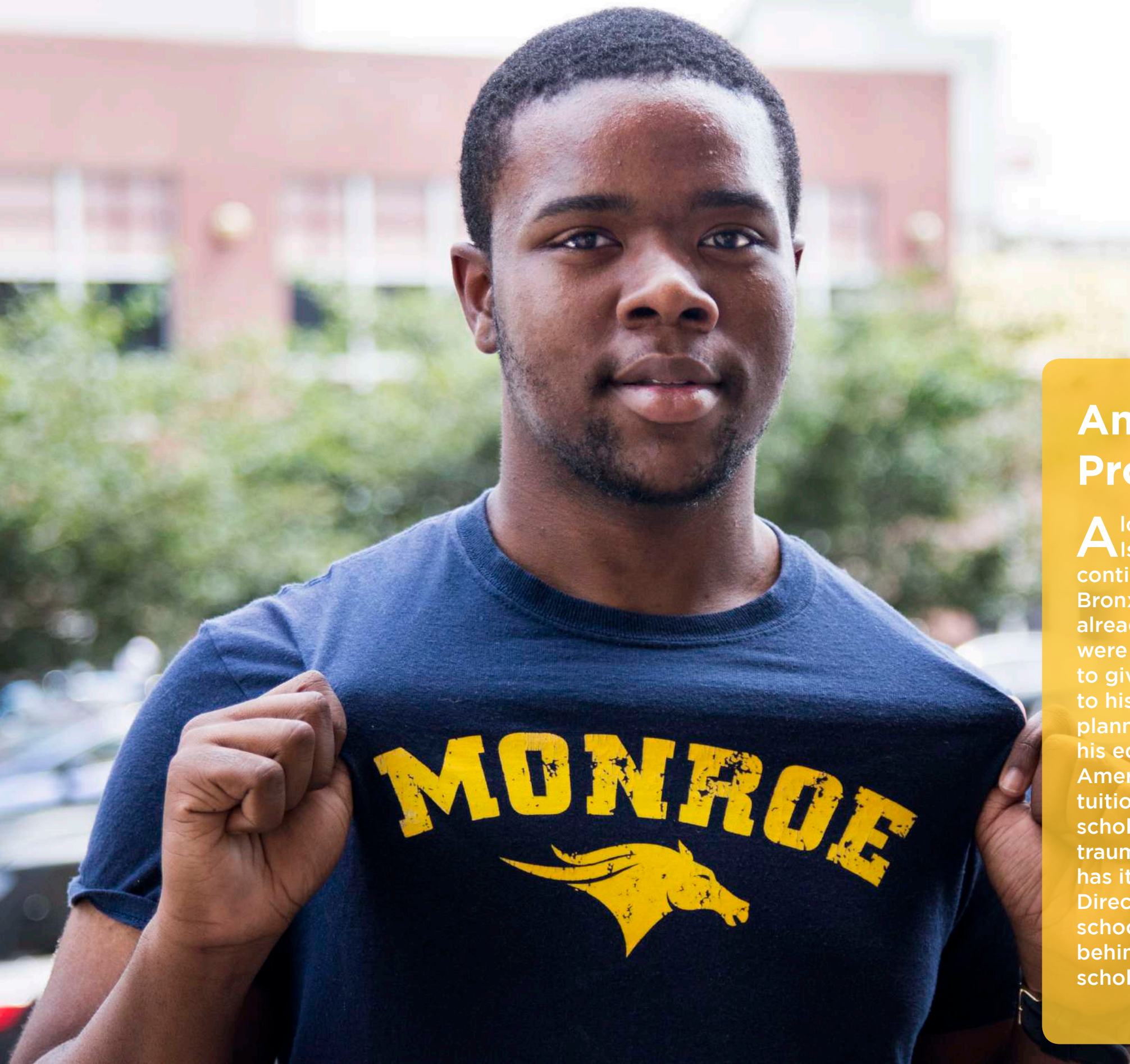
Foster Care & Adoption

Safiya wanted to become a mother. She attended trainings at HSVS. Then, she prepared a nursery and waited. When Safiya first held her baby, Alani opened her eyes and smiled. “And she hasn’t stopped smiling since.” Ultimately, Alani was freed for adoption and permanently became Safiya’s baby girl. Four months later, Safiya was pregnant with twins. “I don’t know what aligned in the universe after Alani came into my home, but now, I have the daughter I always wanted and my beautiful boys. I can’t believe it,” said Safiya with a huge smile. This fall, Alani started pre-school. Safiya has high hopes for her daughter. “Alani’s headed straight to the honors class,” she said, gleaming with maternal pride.

Preventive Services

Camille's family was going through a lot when they first started working with Peggy St. Philippe from HSVS East Brooklyn Family Service Center. In particular, thirteen year old Calista was coping with the loss of her dad, the birth of a new baby sister and the adversities that come with being a teenager. Camille talked about her own struggles growing up and how she mostly raised her daughters on her own. "Now look at us," said Camille looking proudly at her three girls, Calista, Miranda and baby Mattila, cuddled together on the couch. "We're closer and stronger than ever."





American Dream Program

Alonzo was placed in a Staten Island group home, but wanted to continue at his charter school in the Bronx. With a two hour commute and already behind academically, the odds were stacked against him. “I refused to give up,” Alonzo said. He made it to his high school graduation. Alonzo planned to join the military to finance his education, but discovered the American Dream Program, a college tuition scholarship and support. “Our scholars are resilient in the face of trauma. That’s called *grit*. And Alonzo has it,” said Lauren Pettiette, Senior Director of Education. With his high school diploma and the HSVS team behind him, Alonzo is a proud college scholar. “This is a dream come true.”

Supported Housing

Ralph, who grew up in foster care, experienced personal struggles that lead to homelessness. With the supportive team at HeartShare St. Vincent's Services, Ralph has turned over a new leaf. Ralph's apartment is his personal sanctuary filled with his poetry, paintings from a friend and plants from the Union Square Green Market. Ralph earned his GED, and hopes to volunteer as a peer advocate in order to help those who have gone through what he has. Ralph, who now enjoys juicing and long walks through nearby Prospect Park, is healthy and back on his feet.





Community Programs

Mohamed can't wait to play with his friends at P.S. 102 One World After School Program in Bay Ridge. Rewind. Last year, Mohamed was an English language learner, struggling to express himself and thrive in school. "Mohamed was so frustrated because he couldn't verbalize what he wanted to say in English," said his father Emir. With the help of the after-school and summer camp staff at P.S. 102, especially group leader and teacher Robert Terranova, Mohamed's vocabulary quickly expanded. He soon had an easier time in the classroom and with his peers. "The transformation is remarkable," Emir said. "He's learned so much. Thank you."

Chemical Dependency

Daniel knows the difficult road to recovery. Daniel also knows that those who have helped him are in a tough line of work. “Barbara Simmons has a good heart. You can’t pay people to do a job like she does,” he said. Daniel started treatment at the HSVS Chemical Dependency Clinic in downtown Brooklyn, which includes individual and group counseling sessions. “It’s so important to make time for the sessions. It’s not just abstinence. Recovery is talking about how you feel and learning the tools to manage stress,” Daniel explained. Now, Daniel is focused on giving back to those who have supported him unconditionally, including caring for his mom, who is battling cancer.



Our Memberships and Affiliations

GOVERNMENT PARTNERS

HeartShare proudly acknowledges its ongoing partnerships with New York City and State. Their programmatic support and funding enable HeartShare to provide services to those in need.

NEW YORK CITY

Administration for Children’s Services
Department for the Aging
Department of Education
Department of Health
and Mental Hygiene
Department of Youth and
Community Development
Housing Authority
Human Resources Administration
The Council of the City of New York

NEW YORK STATE

Adult Career and Continuing Education
Services-Vocational Rehabilitation
Child and Adult Care Food Program
Department of Education
Department of Health
Department of Health, AIDS Institute
Department of Mental Health
Energy, Research and
Development Authority
New York State Assembly
New York State Senate
Office of Children and Family Services
Office of Mental Health
Office for People With
Developmental Disabilities

MEMBERSHIPS & AFFILIATIONS

Accountable Care Coalition of
Greater New York
American Academy of Cerebral Palsy
and Developmental Medicine

American Academy of Developmental
Medicine and Dentistry
American Association of
Blacks in Energy
American Association of Children’s
Residential Centers
American Association on Intellectual &
Developmental Disabilities
American Occupational Therapy
Association
American Psychological Association
Association for Supervision and
Curriculum Development
Better Business Bureau
Brooklyn Chamber of Commerce
Brooklyn Developmental
Disabilities Council
Brooklyn Health Home
Care Design New York
Coalition of Mainstream
Employment Programs
Columbia University Graduate
School of Social Work
Community Care of Brooklyn PPS
Community Healthcare Network
Consortium for Workers Education
Council for Exceptional Children
Council of Voluntary Family and
Child Caring Agencies
Council on Accreditation of Services for
Families and Children
Council on Social Work Education
Developmental Disability
Nurses Association
Direct Support Professionals Alliance
of New York State Inc.
Health Care Compliance Association
HIV/AIDS Pediatric AIDS
Advisory Group

HIV/AIDS Services Administration
InterAgency Council of Developmental
Disabilities Agencies
InterAgency Transportation Solutions
NYU Lutheran-Led PPS
NYU Tandon School of Engineering
Meaningful NY Initiatives for People
with Disabilities, Inc.
Mt. Sinai/Beth Israel Family Medicine
Residency Program
National Association for the
Education of Young Children
National Association for
Female Executives
National Association of Social Workers
National Council on Family Relations
National Fragile X Foundation
National Fuel Funds Network
National Low Income Energy
Consortium
New York Integrated Network for
Persons with Developmental
Disabilities
New York State Association of
Community and Residential Agencies
New York State Association of
Day Service Providers
New York State Public Service
Commission
New York State Speech-Language-
Hearing Association
NYU/Lutheran Family Medicine
Residency Program
Partnership for After-School Education
Queens Council on Developmental
Disabilities
Society for Human Resource
Management
Special Needs Patient Taskforce at
Staten Island University
Hospital/NS-LIJ
Staten Island Developmental
Disabilities Council
The Genie Foundation
The Training Collaborative for
Innovative Leadership



Our Programs

DEVELOPMENTAL DISABILITIES SERVICES

Total People Served: 9,264

RESIDENTIAL SERVICES

HeartShare offered
homes and apartments
to **373 adults** and **14**
children with I/DD.



- Bay Parkway Residence
- Josephine and Joseph Abatemarco Residence
- Marian and Anthony Attardi Residence
- Avenue L Supportive Apartments
- Bollmann Family Residence
- Kathleen and James Buckley Residence
- Salvatore B. Calabrese Residence
- Canarsie Residence
- Carroll Street Residence
- Joseph and Laura Caruana Residence
- Joseph V. Caruana Residence
- Clinton Residence
- Thomas J. Cuite Residence
- Laura M. Calderhead and Florence A. DeSola Residence
- Community Living Program
- Doonan-Drake Residence
- Elvis Duran Residence
- E. 102nd Street Residence
- Craig and Susan Eaton Residence
- End Place Residence
- Antonetta Ferraro Residence
- Flatbush Residence
- Tamara Tunie and Gregory V. Generet Residence
- Lydia and Napoleon Giannattasio Residence
- Gowanus Residence
- Msgr. Thomas G. Hagerty Residence
- Hart Street Residence
- David Gregory Healy I Residence
- David Gregory Healy II Residence
- Jim Kerr House
- Midwood Residence

- Maureen Moore Residence
- Nancy and Kenneth P. Nolan Residence
- Park Avenue Residence
- Park Slope Residence
- Ralph Avenue Residence
- Rev. Thomas G. Pettei Residence
- Carol and James Scibelli Residence
- Lillian and John Sharkey, Sr. Residence
- Helen and John Sharkey Residence
- Rita P. Short Residence
- Ann and Charles Subbiondo Residence
- Ava and Ralph Subbiondo Residence
- Clare and Frank Torre Residence
- Dr. Catherine White Residence

DAY SERVICES

HeartShare offered learning
opportunities with a focus on
community inclusion to **683 adults** with
I/DD.

- **Frances Aiello Day Habilitation Program** (718) 443-5071
- **Avenue L Day Habilitation Program** (718) 338-3746
- **Bay Ridge Day Habilitation Program** (718) 745-7117
- **Brooklyn Day Habilitation Program** (718) 797-2020
- **Brooklyn Day Hab without Walls** (718) 797-2020
- **Brooklyn Partnering with Autistic CiTizens (PACT) Day Habilitation Program** (718) 797-2020
- **Harry Hoffman Day Habilitation Program** (718) 899-2752
- **Kaleidoscope Day Services Program** (718) 797-2020
- **Eileen and William Lavin Day Habilitation Program** (718) 745-7117
- **Queens Day Habilitation Program** (718) 281-0480
- **Staten Island Partnering with Autistic CiTizens (PACT) Day Habilitation Program** (718) 698-2737
- **Union Turnpike Day Habilitation Program** (718) 969-0419

COMMUNITY HABILITATION SERVICES

HeartShare helped **29 people** with I/DD
living at home set and achieve goals. To
learn more, please call (718) 422-3278.



PREVOCATIONAL & EMPLOYMENT SERVICES

HeartShare prepared **85 adults** with I/DD for the world of work. To learn more, please call (718) 797-7330.

PRE-SCHOOL SERVICES

HeartShare evaluated and educated **910 children** with I/DD, as well as UPK students.

- Governor Mario M. and Matilda Raffa Cuomo Family First Step Early Childhood Center (718) 441-5333
- HeartShare First Step Early Childhood Center, Patrel and Victor Taranto Campus (718) 238-4637
- Lefferts/Liberty Kiwanis First Step Early Childhood Center (718) 848-0300
- Dolly and Frank Russo, Sr. First Step Early Childhood Center (718) 805-7117

INDIVIDUAL SUPPORT SERVICES

HeartShare guided **453 adults** with I/DD to reach their personal goals.

- Medicaid Service Coordination (718) 422-3336
- Self Directed Services (718) 422-3271

FAMILY SUPPORT SERVICES

HeartShare supported **1,060 individuals** with I/DD and their families.

RESPITE/RECREATION PROGRAMS

HeartShare offered respite for families caring for **552 children and adults** with I/DD. To learn more, call (718) 422-3257.

OVERNIGHT RESPITE PROGRAM

HeartShare offered extended overnight respite for families caring for **70 children and adults** with I/DD. To learn more about our Serving People with Autism (SPA) Overnight Respite Program, call (347) 983-4305.

EVALUATION PROGRAM

HeartShare facilitated **24** psychosocial and psychological evaluations for **children with I/DD**. To learn more, call (718) 422-3227.

FRAGILE X PROGRAM

HeartShare provided Fragile X Information and Referrals to **222 people** caring for those with I/DD. To learn more, call (718) 422-3271.

OPTIONS PROGRAM

HeartShare offered financial support improving quality of life for **192 children and adults** with I/DD. To learn more, call (718) 422-3290.

HEARTSHARE EDUCATION CENTER

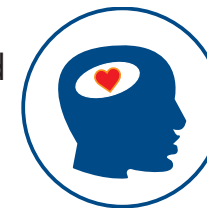
The HeartShare School educated **72 children and teens** with I/DD, including autism spectrum disorders. To learn more, call (718) 621-1614.



HEARTSHARE WELLNESS

HeartShare Wellness

offered health care and health coordination services to **5,585** vulnerable New Yorkers.



ARTICLE 16 CLINIC

offered speech, occupational and physical therapies, individual and group counseling, psychological and psychosocial evaluations, as well as sexuality assessments, to **660 people** with I/DD. To learn more, call (718) 797-2020 x8080.

HEALTH HOME TARGETED CASE MANAGEMENT PROGRAM (TCM)

provides important case management services to **4,925 children and adults** with two or more chronic conditions. To learn more, call (718) 797-7322.

ENERGY ASSISTANCE & COMMUNITY DEVELOPMENT PROGRAMS

HeartShare supported **18,347** low-income New Yorkers through energy grants and responding to the needs of the community.



CARE AND SHARE

(855) 852-2736

Number Served: 5,445

In affiliation with National Grid

NEIGHBORHOOD HEATING FUND

(718) 522-6514

Number Served: 2,992

In affiliation with National Grid

PROJECT SHARE HEATING FUND

(844) 579-5555

Number Served: 7,417

In affiliation with NYS Electric and Gas Corporation (NYSEG) and Rochester Gas & Electric (RG&E)

ENERGYSHARE

(877) 480-7427

Number Served: 2,493

In affiliation with Con Edison

HEARTSHARE ST. VINCENT'S SERVICES

HeartShare St. Vincent's Services (HSVS) empowers **6,869 youth, individuals and families** to overcome seemingly impossible challenges of family crises, addiction, mental illness and poverty.



FOSTER CARE & PREVENTION PROGRAMS

HSVS strengthened **1,300 families** in times of crises. We collaborate with parents and provide the tools and skills necessary to build loving, happy family environments in which children and youth thrive.

FOSTER CARE & ADOPTION

HSVS placed **697 children** in healthier home environments.

- Brooklyn Office (718) 522-3700
- Queens Office (718) 739-5000

PREVENTIVE SERVICES
HSVS offered resources to strengthen **603 families** in crisis.

- Bensonhurst Family Services (718) 234-1717
- East Brooklyn Family Services (347) 770-8155
- Shirley Tanyhill Family Services (718) 372-0580
- Special Medical Prevention Program (718) 422-2447

INTEGRATED HEALTH SERVICES
HSVS provides skills-based therapy and healthcare management to empower **1,691 individuals** to achieve wellness. We guide those in our care to strengthen their family and social relationships, achieve personal goals and contribute more meaningfully to their communities.

MENTAL HEALTH CLINIC
HSVS empowered **1,286 children, youth and adults** to achieve heightened wellbeing. To learn more about our Article 31 Mental Health Clinic, call (718) 522-6011.

CHEMICAL DEPENDENCE
HSVS helped **405 adults** treat addiction. To learn more, call (718) 422-2291.

RESIDENTIAL & HOUSING PROGRAMS
HSVS provides safe homes for **220 children, youth and adults**. Our clients, given the security they sense in a safe, caring and stable living environment, combined with targeted support services, are empowered to overcome the challenges in their lives.

YOUTH RESIDENCES
HSVS provided safe homes to **69 foster youth** in residential care to support stability.

- A. Miller Corwen Residence
- Baldwin J. and Josephine DiGiovanna Residence
- Meiers Corner East Residence
- Richmond Hill Residence

CHILDREN’S COMMUNITY RESIDENCES
HSVS delivered therapeutic support in a group residential setting to help **43 children** manage behavioral difficulties.

- Brownsville Children’s Community Residence
- Laurelton Children’s Community Residence
- Springfield Gardens Children’s Community Residence
- St. Alban’s Children’s Community Residence

SUPPORTED HOUSING SERVICES
HSVS provided housing to help **108 adults** experiencing health, financial and other difficulties stabilize their lives. To learn more, call (718) 422-2219.

- HIV/AIDS Residential Housing Program
- Forensic Supported Housing Program
- Severe Mental Illness Supported Housing Program
- Young Adult Supported Housing Program

YOUTH DEVELOPMENT & COMMUNITY PROGRAMS
HSVS encourages **3,658 children and youth** in the community and in foster care to develop positive and constructive relationships, expand their experiences and achieve their dreams.

COMMUNITY PROGRAMS
HSVS created an enriched learning community for **3,626 children, youth and adults** through its after-school, evening and summer camp programs.

- McKinley I.S. 259 Beacon Program (718) 836-3620
- P.S. 102 One World After-School Program (718) 567-2365
- P.S. 288 Shirley Tanyhill Beacon Program (718) 714-0103
- Surfside Cornerstone Program (718) 996-5893
- Wyckoff Gardens Cornerstone Program (718) 834-8595

THE AMERICAN DREAM PROGRAM
HSVS supported youth in foster care to achieve their college and career dreams. To invest in our American Dream Program Scholars, call (718) 422-2339.

Our Donors



HeartShare extends its sincerest appreciation to its generous supporters, and gratefully acknowledges the following contributors who donated \$250 or more between July 1, 2016 and June 30, 2017. Your gracious support assists HeartShare in providing high-quality services to over **34,000** New Yorkers. If we inadvertently omitted your name, please accept our sincerest apologies,

and ask that you contact us at (718) 422-4213.

If you would like to contribute, please use the enclosed envelope, visit www.heartshare.org or mail your contribution to:

HeartShare Human Services of New York
Attn: Public Affairs Office
12 MetroTech Center, 29th Floor
Brooklyn, NY 11201

#	AI & Peggy DeMatteis Family Foundation	Thomas G. Ashmore	Beacon Therapy Services, PLLC	Anthony F. and Marie Bianca	Door Corp.
147 Remsen Street Associates LLC		AST Fund Solutions, LLC			Bruce Supply Corp.
7X24 Exchange Inc.	Alpha Kappa Alpha Sor., Inc.	B	Bedford Funding Corp./Martin G. Murray	Birth Inc.	Bryan Butvick
A	Evelyn A. Alvarez and Terry Richards	Eunice Beck	The Honorable and Mrs. Ariel E. Belen	Bivona & Company, LLC	BTIG, LLC
Paulette and Michael J. Abatemarco	John J. Amore	Arleen Baez	Mr. and Mrs. Joseph R. Benfante	Joseph Bivona	James G. and Margaret Buckley
Leslie Abbey	Anchors Aweigh Associates LLC	Lourdes Bailey	Mary Bennett	Elizabeth B. Black	Kathleen Buckley
Kenneth Abruzzi	Renee Anderson	Joan Baim, Esq.		Blue Ribbon Fish Company, Inc.	Bull Productions, Ltd./Rosanna Scotto and Louis Ruggiero
Gary L. Ackerman	Angels on the Bay, Inc.	Bernard J. Baldinger	Bensonhurst Bay Ridge Kiwanis Foundation, Inc.	Bonide Foundation Inc.	John J. Burke
Adelphi Academy of Brooklyn	Pearl Anish	Michael Bane	Bensonhurst Construction Corp.	John M. Boyle	C
Estate of Monsignor Domenick J. Adessa	Apollo/Raland Brokerage	Mitchell Banchik	Bensonhurst Lions Club	Bryan L. Bradley	Vanessa Cabrejos
Thomas Aellis	Marika S. Apostolakis	Bartel Construction Corp.	Gennaro Berardelli	Jill Bragg	Douglas P. Caffarone
Afederal Exterminating LTD	Approved Oil Company	Richard Barnard	Gerry Berardelli	Diane Brand	Joseph Calabrese
James Agoglia/RAM Abstract, Ltd.	Marina Arnold	Noreen A. Barnes	Phyllis J. Berman	Briscoe Protective Systems, Inc.	Mr. and Mrs. Salvatore B. Calabrese
Ilan Aharoni	Arthur Webb Group, Ltd.	Dominick Barone	BGBY Investments, LLC/Mark C. Healy	Brooklyn Board of Business Agents	Dr. and Mrs. Robert Calciano
Bryon J. Ahlemeyer		Bay Ridge Federal Credit Union	Mousumi Bhakta	Brooklyn Cyclones	
		Bayside Fuel Oil Depot Corporation		Brooklyn Window &	

Cambium Partners LLC	Stephen P. Cecere and Kathleen L. Johnstone	Estate of Bertha M. Craig	E	Marianne Fletcher	Jonathan C. Goldstein, Esq.		Patricia A. Hoza	Joseph P. Clavin Sons, Inc.	Mr. and Mrs. William K. Lavin	Marine Park Funeral Home Inc.	Mr. and Mrs. Terence K. Mullin	Katelyn M. O’Grady			
James Capalino	Michael Cervini	Lorenzo Cricchio		Mr. and Mrs. Craig A. Eaton	Jose A. Gonzalez		HSBC Bank USA, N.A.	K	Mr. and Mrs. Henry Lessler	Marsh & McLennan Agency, LLC	Joseph Mure, Esq.	Kathleen O’Hara			
John J. Capela	Vincent Cervone	James L. Crimmins		Eaton & Torrenzano LLP	Shanna Gonzalez		Marie Gail Huber		Joyce F. Levin and Gary Perl	Mr. and Mrs. Bruce H. Mattson	Joseph P. Murin	Ana Oliveira			
Stanley and Karen Capela	Geraldine Chapey	AnnMarie Crowell	D	Mary Eaton	Sarah Graizbord		Rose Mary Hughes	William R. Kahn	Erin Levine	Danielle Maurice	Mr. and Mrs. Martin G. Murray	Mr. and Mrs. Brian O’Reilly			
Mr. and Mrs. Carl Campagna	Brian Charles	Rocco Crupi		Mr. and Mrs. Russell R. Eberhardt	Ed Fried		William T. Hunter		Bruce Levy	Dione Mayer	Sheila and John Murray	James D. Orlando			
Jeffrey Campbell	Chipotle Mexican Grill	Barbara N. Cuthel		EEG, Inc.	Friends of Marty Golden		I		Jeffrey E. Levy	MBS Graphics Inc.	MYLAW Realty Corporation/Robert M. Corwen, Jr.	Orlow, Orlow & Orlow, PC			
Michael Capello	Aaron Choo	Michael A. and Antoinetta Cutrona		Brian Elgart	Luis Fujimoto		Iannelli Construction Co. Inc./Vincent Iannelli	Michael Keane	Liberty Mechanical Contractors Inc.	Eileen J. McCabe	Our Lady of Angels Church	P			
Gerard S. Capers	Church Mutual Insurance Company Foundation	Jess Dannhauser		Glenda Elie	Guardian Life Insurance Company		Joseph M. Iavarone		Shinece McClymont	Santino Montalbano					
Edward F. Card	Peter Ciaccia	Adam D’Auguste		William F. Elliott	Laura Gaines		IL Mare Pizzeria Corp.	Kennedy’s Restaurant	Sandra Lichtenstein	Mr. and Mrs. Cody K. McCone	N				
Chris Carey	Nancy C. Cianflone	Sal D’Egidio		Elizabeth Elston	Galway Properties, LLC		Rita Imperato		Lifetouch National School Studies	Arnold J. McCormick	Vincent L. and Gina Pagnotta				
Maria Carlucci	Cicatelli Associates, Inc.	Mr. and Mrs. Angelo J. Del Giudice		Paul Elston	Barry Emen		Garguilo’s Restaurant	H		Maria Ljubich	Thomas J. McManus, Esq.		Scott Palma		
Thomas J. Carroll	George A. Cincotta, Jr.	Frank Del Giudice		Karen Erhard	Genesis Masonic Lodge #1			Loeb & Troper, LLP	Brian Nelsen	Joy D. Palmer	New York Design Center Inc.				
William G. Carroll	John DeLosa	Lucille DeLorenzo		Raymond Eschwie	Suni Escobar			The Reverend Monsignor Robert M. Harris	Kiwanis Club of Lefferts Liberty	LPS Futures LLC	Robert B. Milea	Mr. and Mrs. Kenneth P. Nolan			Charles Norton
Dr. and Mrs. Joseph A. Caruana	Ryan Clarke	John DeLosa		Anthony Gerasi	Mr. and Mrs. Frank V. Geremia, Sr.	Irving Pharmacy Corp.		Kiwanis Club of Lefferts Liberty		Concetta Longabardi	Thomas J. Mellett	Thomas J. Mellett			John B. Pannone
Mr. and Mrs. Thomas Caruana	Anthony Clemenza, Sr.	Ronald S. Esposito		Evers Pharmacy	The Reverend Monsignor Robert M. Harris					J Hassan Consulting LLC	Richard Nolan	NYC Gives (Municipal Employees)			O
Carone & Associates PLLC	William J. Clinton	Everest Reinsurance Company, Ltd.		Anthony DeMonaco	George L. Clark, Inc. Realtors		Ira W. De Camp Foundation, Inc.	LPS Futures LLC	Robert B. Milea	Mr. and Mrs. George J. Pandel	Thomas J. Patchett				
CARR, A Xerox Company	Codispoti & Associates, P.C.	Design 2174, Ltd.			Express Group, LLC		Cheryl A. Geremia and Richard A. Schulsohn		Iron Mountain	Concetta Longabardi	Mr. and Mrs. Frank J. Maresca	Charles Norton			
Enitza Carril	E. Jeanette Collins	Dr. and Mrs. John J. DiGregorio	Barbara Falcone		Mr. and Mrs. John M. Geremia	Irving T. Bush Foundation, Inc.	Knights of Columbus Columbus Council #126		Johnny Johnston	L	Marco Polo Ristorante	NYC Gives (Municipal Employees)	O		
Donna M. Carroll	Colony Pest Management, Inc.	Mr. and Mrs. Eric DiNapoli	Thomas Fascianella		Kathleen Gennaoui	Joseph M. Giardina					Madison Planning Group, Inc.	Joshua Lamberg			Theresa and Jaques Malot
Case Cash Funding, LLC	John A. Colonna	Mr. and Mrs. Richard DiNapoli	FCL Charitable Foundation Trust	Mr. and Mrs. Edward N. Giannattasio	James J. Buckley Restaurant Corp.	Karen C. Johnson		Mallilo & Grossman							
Francis P. Casey	Columbiettes, Samuel Cardinal Stritch Council #4661	Enrico DiNardo		Robert E. Falk	Geremia Financial Services, LLC		J Hassan Consulting LLC	Joshua Lamberg	Theresa and Jaques Malot						
William R. Casey	Mamadou Dione	Enrico DiNardo		Thomas Fascianella	Mr. and Mrs. Frank V. Geremia, Sr.		Irving Pharmacy Corp.		Kiwanis Club of Lefferts Liberty			Concetta Longabardi	Thomas J. Mellett	Thomas J. Mellett	John B. Pannone
Mr. and Mrs. Thomas J. Cassara	Commerical Building Maintenance Corp.	Direct Freight Express		FCL Charitable Foundation Trust	Mr. and Mrs. John M. Geremia		Irving T. Bush Foundation, Inc.						J Hassan Consulting LLC	Richard Nolan	NYC Gives (Municipal Employees)
Robert J. Cassiliano	Committee to Re-Elect George Onorato	Nicholas T. Domingues	Barbara Feldon	Jennifer Glover-Outlaw	Christopher G. Jones and Stephanie Louer		Mallilo & Grossman	Joshua Lamberg	Theresa and Jaques Malot						
Catholic Cemeteries, Diocese of Brooklyn	Complete Medical Products	Donna and James O’Meara Charitable Foundation	Lillian T. Fiore	The Reverend Patrick S. Flanagan, CM	Home Abstract Corp./Mark and Gregory D’Addona				Manhattan Beer Distributors				Patricia S. O’Connell		
Alfred Cavallaro, Esq.	Gerard Conlon	Dennis and Megan Donnelly													
Daniel Cavanagh	James F. Connolly	Brian E. and Audrey Donohue													
Paul Cellupica	Conte Carpets and Flooring	Andrew T. Drake		Lynette Fernandez	Global Communications Services, Inc.		Mr. and Mrs. J. Peter Clavin	Joshua Lamberg	Theresa and Jaques Malot						
Celtic General Contractors, Inc.	Veronica Corbett	Driscoll Foods/George J. Pandel		Lillian T. Fiore	The Reverend Patrick S. Flanagan, CM		Home Abstract Corp./Mark and Gregory D’Addona					Manhattan Beer Distributors	Patricia S. O’Connell		
Marjorie Centrone	Hayley Cowitt	The Reverend Patrick S. Flanagan, CM		The Reverend Patrick S. Flanagan, CM	Jennifer Glover-Outlaw		Christopher G. Jones and Stephanie Louer							Mallilo & Grossman	Joshua Lamberg
Century 21 Homefront	Maurice Cozzo			Robert C. Golden and Maureen Moore	Home Abstract Corp./Mark and Gregory D’Addona		Mr. and Mrs. J. Peter Clavin	Joshua Lamberg	Theresa and Jaques Malot	O					

Ambium Partners LLC	Stephen P. Cecere and Kathleen L. Johnstone	Estate of Bertha M. Craig	E	Marianne Fletcher	Jonathan C. Goldstein, Esq.
James Capalino	Michael Cervini	Lorenzo Cricchio	Mr. and Mrs. Craig A. Eaton	Ellen Floyd	Jose A. Gonzalez
John J. Capela	Vincent Cervone	James L. Crimmins	Eaton & Torrenzano LLP	Norma Forde	Shanna Gonzalez
Stanley and Karen Capela	Geraldine Chapey	AnnMarie Crowell	Mary Eaton	Demetrios Frangiskatos	Sarah Graizbord
Mr. and Mrs. Carl Campagna	Brian Charles	Rocco Crupi	Mr. and Mrs. Russell R. Eberhardt	Ed Fried	Adrianne Grant
Jeffrey Campbell	Chipotle Mexican Grill	Barbara N. Cuthel	EEG, Inc.	Friends of Marty Golden	Graybeards Ltd.
Michael Capello	Aaron Choo	Michael A. and Antoinetta Cutrona	Brian Elgart	Luis Fujimoto	Kathleen Grosvenor
Gerard S. Capers	Church Mutual Insurance Company Foundation	D	Glenda Elie	G	Guardian Life Insurance Company
Edward F. Card	Peter Ciaccia	Jess Dannhauser	William F. Elliott	Laura Gaines	William R. and Donna Guarinello
Chris Carey	Nancy C. Cianflone	Adam D'Auguste	Elizabeth Elston	Mary Galante	Guggenheim Partners, LLC
Maria Carlucci	Cicatelli Associates, Inc.	Sal D'Egidio	Paul Elston	Galway Properties, LLC	Efrain N. Guzman
Thomas J. Carroll	George A. Cincotta, Jr.	Mr. and Mrs. Angelo J. Del Giudice	Barry Emen	Gargiulo's Restaurant	H
William G. Carroll	Ryan Clarke	Frank Del Giudice	Karen Erhard	Garguilo's Restaurant Staff	Mr. and Mrs. William A. Halvorsen
Dr. and Mrs. Joseph A. Caruana	Anthony Clemenza, Sr.	John DeLosa	Raymond Eschwie	Genesis Masonic Lodge #1	Harbor Fitness Gyms
Mr. and Mrs. Thomas Caruana	William J. Clinton	Lucille DeLorenzo	Suni Escobar	George L. Clark, Inc. Realtors	Courtney Hardart
Carone & Associates PLLC	Codispoti & Associates, P.C.	Anthony DeMonaco	Ronald S. Esposito	Anthony Gerasi	Jean-Marc Harfouche
CARR, A Xerox Company	E. Jeanette Collins	Design 2174, Ltd.	Everest Reinsurance Company, Ltd.	Cheryl A. Geremia and Richard A. Schulsohn	Marilyn A. Harris
Enitza Carril	Colony Pest Management, Inc.	Deno's Wonder Wheel Park	Evers Pharmacy	Mr. and Mrs. Frank Geremia	The Reverend Monsignor Robert M. Harris
Donna M. Carroll	John A. Colonna	Dr. and Mrs. John J. DiGregorio	Express Group, LLC	Mr. and Mrs. Frank V. Geremia, Sr.	Abigail Hawk and Bryan Spies
Case Cash Funding, LLC	Columbiettes, Samuel Cardinal Stritch Council #4661	Mr. and Mrs. Eric DiNapoli	F	Mr. and Mrs. John M. Geremia	Mr. and Mrs. Mark C. Healy
Francis P. Casey	Commerical Building Maintenance Corp.	Enrico DiNardo	Barbara Falcone	Geremia Financial Services, LLC	Heating & Burner Supply, Inc.
William R. Casey	Committee to Re-Elect George Onorato	Mamadou Dione	Anthony J. Famighetti	Kathleen Gennaoui	Helen Matchett DeMario Foundation
Mr. and Mrs. Thomas J. Cassara	Complete Medical Products	Direct Freight Express	Rebecca Fabian	Mr. and Mrs. Edward N. Giannattasio	Brian Hennessey
Robert J. Cassiliano	Gerard Conlon	Nicholas T. Domingues	Robert E. Falk	Joseph M. Giardina	Erin Hennessy
Catholic Cemeteries, Diocese of Brooklyn	James F. Connolly	Donna and James O'Meara Charitable Foundation	Thomas Fascianella	John J. Gilhooly	Dr. Farah Herbert
Alfred Cavallaro, Esq.	Conte Carpets and Flooring	Dennis and Megan Donnelly	FDNY Captain Timothy Stackpole Foundation	Cristina Givelechian	Thurman Hickson
Daniel Cavanagh	Veronica Corbett	Brian E. and Audrey Donohue	Victor Feld	Global Communications Services, Inc.	Michael F. Higgins
Paul Cellupica	Hayley Cowitt	Andrew T. Drake	Barbara Feldon	Jennifer Glover-Outlaw	Calvin Klein Hoffman
Celtic General Contractors, Inc.	Maurice Cozzo	Driscoll Foods/George J. Pandel	Lynette Fernandez	Robert C. Golden and Maureen Moore	Janine and David E. Halldorson
Marjorie Centrone			Lillian T. Fiore		Home Abstract Corp./Mark and Gregory D'Addona
Century 21 Homefront			The Reverend Patrick S. Flanagan, CM		

Prospect Drugs Company, Inc.	Charles Russo	Javier R. Seymore	Catherine Symbouras	Tommy's Auto Repairs, Inc.	Katie and Charles Wagner
Prudential Foundation Inc.	Mr. and Mrs. Giacomo (Nino) Russo	Mr. and Mrs. John T. Sharkey	T	Clare T. Torre	Shawnta Washington
James L. Purcell	Louis Russo	Sophia L. Shaw	Rita M. Tan	Jillian Torre	Sekou Waters
John H. Purcell	Nicholas J. Russo	Neil Sherry	Anne C. and Joseph V. Taranto	Mr. and Mrs. Paul J. Torre	WCA Technologies, Inc.
Joy M. Purcell	S	Brian S. Shlissel	Tastee Bait & Tackle	Alexander Trantino	Weichert, Realtors - The Franzese Group
Q	Adine Sacks	Christine Shon	Technical Elevator Inc.	Rosemarie Tranty	Richard Weiner
Queens Boulevard Extended Care Facility	Dawn V. and Gabe Saffayeh	Tony Sirico	Telco Experts LLC	Michael Troisi	Michael Wells
R	Mr. and Mrs. George Saffayeh	Peter Skavla	Stephen Tellone	Mr. Turocchia	Karen Westermeier
R.J. Bruno International, Inc.	Mr. and Mrs. Robert Saffayeh	Joshua Skolnick	Linda M. Tempel and The Honorable Alex Calabrese	Sam Turvey	Dawn White
Linda Rasport	Silvan Samaroo	Barbara A. Slattery	Two Trees Management Co. LLC	John Whittall	William M. Casey Foundation, Inc.
Craig A. Ratigan and Laurie Donnelly	Amanda Sanderson	Jermaine Sean Smith	Laura Tesoro	U	Rhonda Williams
RE/MAX Metro	Janice Saunders-Ashton	Patricia Smyth	The Aellis Family	United HealthCare Services, Inc.	Wingate Kearney & Cullen, LLP
Michael J. Reap	Josephine and Richard Savastano	Michael Sorrentno	The Bravest Football Club Inc II	V	WISH of Rockaway, Inc.
Redlich Horwitz Foundation	Stephen G. Savegh	St. Edmund Preparatory High School	The Delorio Law Group PLLC	Alberto Valentin	Richard P. Wismer
Shannon M. Reilly	Kevin Scanlon	St. Francis College	The Fitch Group	Valentino Interiors Inc.	Wolf Properties Management LLC
Maureen A. Relland, MD	Grace Schaeffer	St. John's University	The Frederick Foundation	Vassalotti Associates Architects, LLP	Doris S. Wong
Dan Repetti	Lisa Scher	Stanley's Furniture & Radiator Covers	The Ghetto Kids Inc.	J.E. Vassalotti	X
Jennifer Reres	Stephen M. Schewel	Starz Power Productions, LLC	The Home Depot, Inc.	Jerry Vecchio	Xaverian High School
Mr. and Mrs. Vincent Ricciardi	Estate of Madeline T. Scott	Barbara Stein	The Martin-Lehrer Foundation	Edgardo Velez	Y
James J. Riches	Jessica Schiffman	Jane Steinberg	The New York Community Trust	Carol A. Verdi	Y2K Credit Solutions
Ridge Abstract Corporation	Security Technology Bureau, LLC	Steve Belsito Sons, Inc.	The Pinkerton Foundation	Mr. and Mrs. Kenneth Vitale	Mr. and Mrs. Ty Yorio
Ridgewood Savings Bank	SEFA - State Employees Federated Appeal	Nancy Stokes	The Sidney, Milton & Leoma Simon Foundation	Mr. and Mrs. Salvatore Vittoria	IN KIND DONATIONS
Sean Ringgold	Marie Irvine Semexant	Richard Storm	The Stanley Living Trust	Thomas Vittoria	W
Marc Roche	Marie Irvine Semexant	Christine E. and John T. Strehle	The Weinstein Group, P.C.	Patrick J. Waide, Jr.	A
Joanne Rodriguez-Greene	Semper Capital Management	Mr. and Mrs. Robert A. Strehle	The Whitmore Group, Ltd.	Wall Street Mortgage	AF Bennett Salon
Xaviera Romero	Serenbetz Family Foundation, Inc.	Michael Strehle	James W. Theis	James Walsh	Amateur Radio Emergency Service (ARES)/Queens
Brooke and Ben Rosenthal	Paul Serenbetz	Donna and Frank Stryczek	Angela Thomas	Jeffrey Walsh	American Golf Corporation
Robert Rossi	Robert C. Serenbetz	Brian Sullivan	Charles Thurman	Julie Walsh	Archbishop Molloy High School
Rotary Club of Verrazano	Thelma Serenbetz	Ava Subbiondo	Patrick J. Tiernan	Mary T. Walsh	
Anthony Russo	Warren Serenbetz	Subin Associates, LLP	Tom & Arties Auto Service	Walter & Olivia Keibach Foundation	
	Servpro of Northwest Brooklyn	Mr. and Mrs. Daniel B. Sullivan		Casey K. Wagner	

B	F	Joyce F. Levin	R
Bay Ridge Federal Credit Union	FDNY Captain Timothy Stackpole Foundation	M	RAM Abstract, Ltd.
Bay Ridge Manor	Ft. Hamilton Army Base	Manhattan Toy Company	Rockaway Point Volunteer Fire Department/EMT
Bedford Funding Corp.	G	The Maniscalco Family/Heartfelt Foundation	Mark Russell
Kristen Bell	Gargiulo's Restaurant	Marco Polo Ristorante	S
Biscuits & Bath	Joseph M. Giardina	Marine Park Golf Course	Sacred Hearts of Jesus and Mary and Saint Stephen's Parish
Brady & Marshak, LLP	Michael T. Goldstein, MD	Joan Martisen	Robert C. Saffayeh
Breezy Point CoOp	Joseph B. Guarinello	Lawrence Mathieu	John Sawinski
Brooklyn Cyclones	William R. Guarinello	Danielle Maurice	Javier R. Seymore
Buckley's Restaurant	H	Rocco Mercelli	Shamrock AC
Kathleen Buckley	The Reverend Monsignor Robert M. Harris	Miraglia Funeral Chapels, Inc.	Peter Skavla
C	HBO Entertainment	Danielle A. Mullahy	St. Bernadette R.C. Church
Stanley Capela	Heidell, Pittoni, Murphy & Bach	Nancy and Daniel B. Mullahy	St. Ephrem R.C. Church
Carlson Audio Visual	Home Abstract Corp.	Terence K. Mullin	St. Francis College
Catholic Cemeteries, Diocese of Brooklyn	Wei-An Huang	Sheila Murray	St. Jerome R.C. Church
Catholic Cemetery Guild	J	National Grid - Field Operations	Dorothy and Tom Stagg
CB Richard Ellis, Inc.	James J. Buckley	Allen Newman	Starbucks - Bay Ridge
Charity Fund Raising	James J. Buckley Restaurant Corp.	New York Marriott Marquis	Tracey and David Shankman
Charity Grow	JetBlue Airways	Nooodle Pudding	Staten Island Skating Pavilion
Melody Chin	JoMart Chocolates	O	T
Citadel Security Agency	Joseph P. Clavin Sons, Inc.	Oheka Castle	Teachers Retirement System of the City of New York
Andrew Cole	Kennedy's Restaurant	Orangetheory Fitness Brooklyn Heights	Linda M. Tempel
Colonia Country Club	Kenneth Chen Photography	Orangetheory Fitness Park Slope	U
Minerva Confessor	Kings Auto Group	Orangetheory Fitness Williamsburg	Union Beer Distributors
Kevin Conlon	Knights of Columbus Joseph B. Cavallaro Council	Casey O'Reilly	Uno Pizzeria and Grill
Dick's Sporting Goods	Knights of Columbus New York State Council	P	USS Intrepid Former Crew Members Association - NY Chapter
DJ Drew Palmer	Kramer Portraits, New York	P.S. 204 Vince Lombardi Elementary School	W
DJ Suds/Brian Sutherland	LA Fitness	Polsky Sports and Entertainment	Charles Wagner
Brian E. Donohue	Robert Lafemina	Debra L. Poulter	Walt Disney World Co.
Elvis Duran	Lexus of Brooklyn	Provence En Boite French Restaurant	Y
Dyker Beach Golf Course		Louise Puccarelli	
E			
Daniel Edwards			
John Edwards			

Published by
HeartShare Human Services of New York
Jennifer Reres <i>Vice President of Communications</i>
Andrew Moeller <i>Graphic Design Coordinator</i>
Molly Hauer <i>Digital Media Associate</i>
November 2017

Our Financials

HeartShare's Financial Report

Year ending June 30, 2017

Services for the Developmentally Disabled

Residential Programs
Day Programs
Early Childhood Services
Family Support

REVENUE *

\$54,648
\$23,170
\$14,564
\$1,215

EXPENSES *

\$45,805
\$21,361
\$13,185
\$1,028

Affiliated Programs

HeartShare Saint Vincent's-Grand Total
-Adoption, Foster Care, and Independent Living
-Family Centers & Youth Programs
-Housing Programs
-Integrated Health (Medicaid, OPC, CD)
-Other Programs

\$37,790
\$15,255
\$5,801
\$11,791
\$4,943

\$39,189
\$15,604
\$5,567
\$10,955
\$6,338
\$725

The HeartShare School
HeartShare Wellness Ltd.
Health Home
Energy Programs

\$3,853
\$2,326
\$3,032
\$198

\$3,415
\$1,887
\$2,087
\$146

Total Program

\$140,796

\$128,103

Management and General
Fundraising

\$14,333
\$615

Total Supporting Services

\$14,948

Public Support and Other Revenue

Contributions
Net Special Event Income
Grant Income

\$2,339
\$422
\$1,078

Total Public Support and Other Revenue

\$3,839

TOTAL

\$144,635

\$143,051

Beginning Net Assets 7/1/2016

\$16,095

Ending Net Assets 6/30/2017

\$17,679

(*dollars in Thousands)
Copies of HeartShare's audited financial statements are available upon written request to HeartShare Human Services,
12 MetroTech Center, 29th Floor, Brooklyn, NY 11201.

2017 Annual Report

